



MEMBER
AREIDA
(CREDAI ASSAM)

RERAA KM163 OF 2024-2025

PALACIA HABITAT

PADUMBORI, GOTANAGAR, JALUKBARI
GUWAHATI





1ST & 3RD FLOOR PLAN

UNIT
1A & 3A
13BHK

CARPET AREA = 92.41 SQ. M
NET FLAT AREA = 107.08 SQ. M
SUPER BUILD UP AREA = 1445 SQ. FT

UNIT
1B & 3B
13BHK

CARPET AREA = 77.95 SQ. M
NET FLAT AREA = 92.97 SQ. M
SUPER BUILD UP AREA = 1250 SQ. FT

UNIT
1C & 3C
12BHK

CARPET AREA = 59.23 SQ. M
NET FLAT AREA = 67.46 SQ. M
SUPER BUILD UP AREA = 875 SQ. FT

UNIT
1D & 3D
13BHK

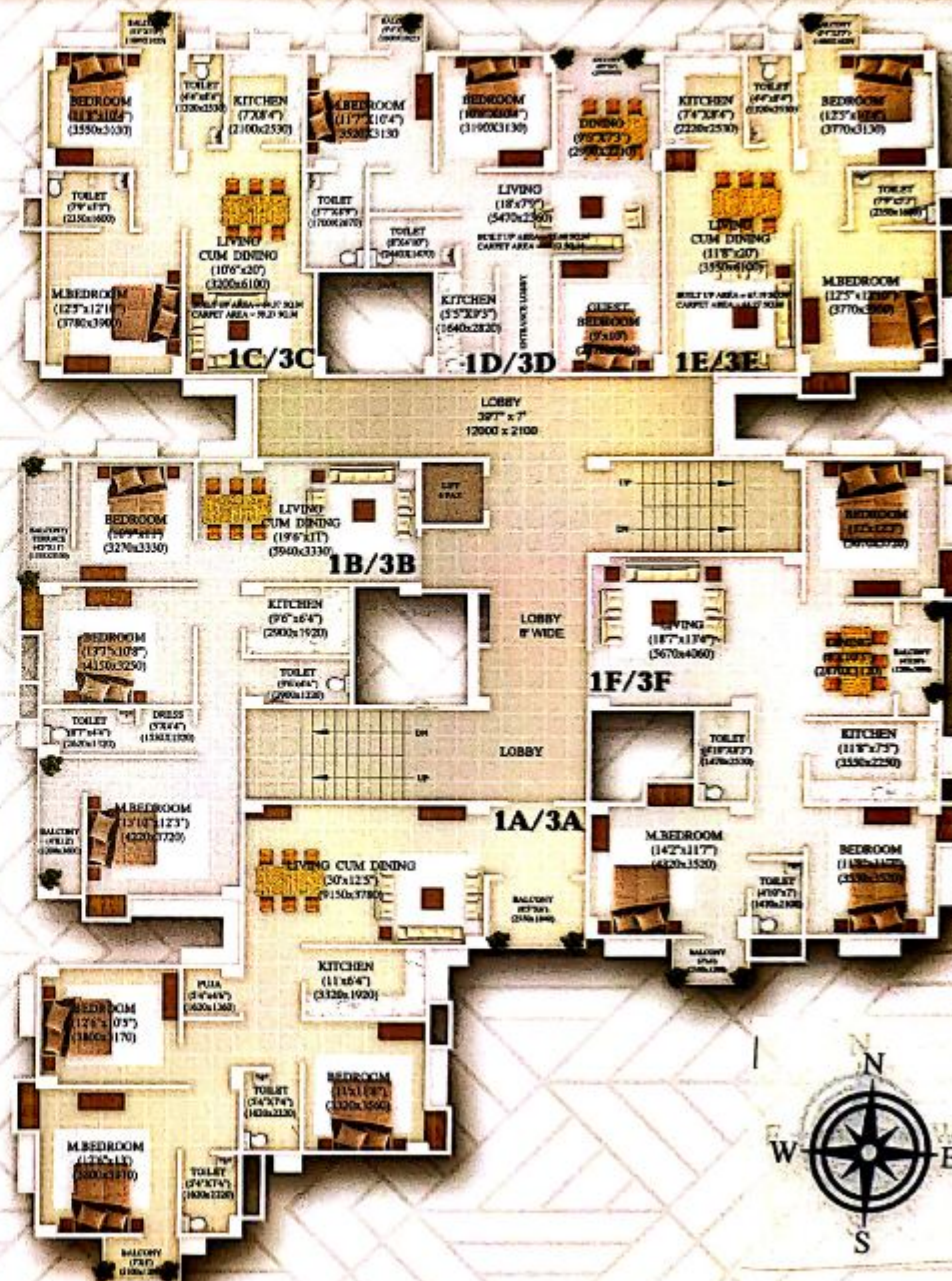
CARPET AREA = 68.13 SQ. M
NET FLAT AREA = 76.68 SQ. M
SUPER BUILD UP AREA = 1045 SQ. FT

UNIT
1E & 3E
12BHK

CARPET AREA = 61.27 SQ. M
NET FLAT AREA = 67.27 SQ. M
SUPER BUILD UP AREA = 905 SQ. FT

UNIT
1F & 3F
13BHK

CARPET AREA = 92.41 SQ. M
NET FLAT AREA = 107.08 SQ. M
SUPER BUILD UP AREA = 1445 SQ. FT



2ND FLOOR PLAN

UNIT
2A
13BHK1

CARPET AREA = 92.41 SQ. M
NET FLAT AREA = 107.08 SQ. M
SUPER BUILD UP AREA = 1445 SQ. FT

UNIT
2B
13BHK1

CARPET AREA = 77.95 SQ. M
NET FLAT AREA = 92.97 SQ. M
SUPER BUILD UP AREA = 1250 SQ. FT

UNIT
2C
12BHK1

CARPET AREA = 61.27 SQ. M
NET FLAT AREA = 69.51 SQ. M
SUPER BUILD UP AREA = 935 SQ. FT

UNIT
2D
12BHK1

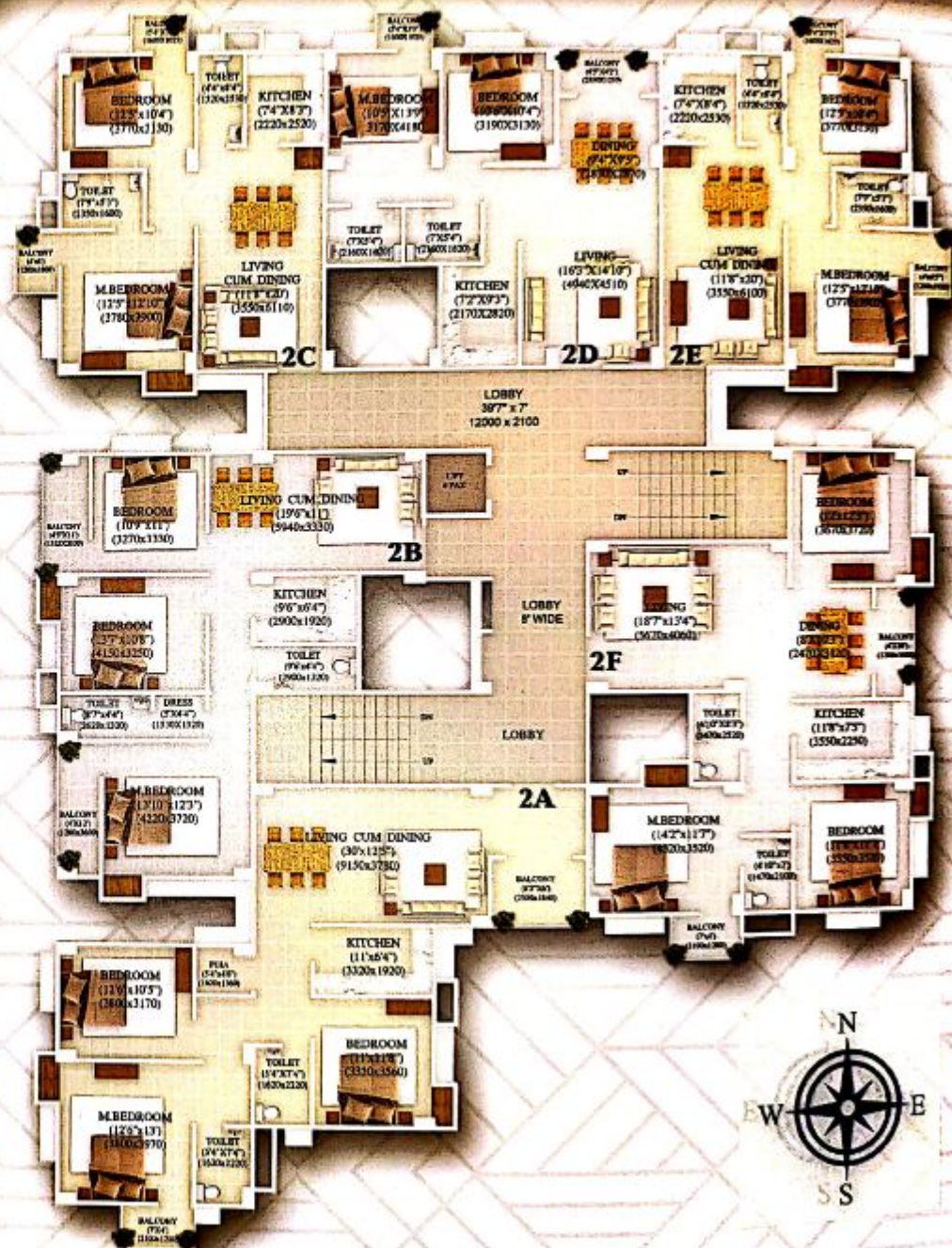
CARPET AREA = 65.35 SQ. M
NET FLAT AREA = 73.63 SQ. M
SUPER BUILD UP AREA = 995 SQ. FT

UNIT
2E
12BHK1

CARPET AREA = 61.27 SQ. M
NET FLAT AREA = 69.51 SQ. M
SUPER BUILD UP AREA = 935 SQ. FT

UNIT
2F
13BHK1

CARPET AREA = 92.41 SQ. M
NET FLAT AREA = 107.08 SQ. M
SUPER BUILD UP AREA = 1445 SQ. FT



4TH FLOOR PLAN

UNIT
4A
13BHK1

CARPET AREA = 92.41 SQ. M
NET FLAT AREA = 107.08 SQ. M
SUPER BUILD UP AREA = 1445 SQ. FT

UNIT
4B
13BHK1

CARPET AREA = 77.95 SQ. M
NET FLAT AREA = 92.97 SQ. M
SUPER BUILD UP AREA = 1250 SQ. FT

UNIT
4C
12BHK1

CARPET AREA = 61.27 SQ. M
NET FLAT AREA = 69.51 SQ. M
SUPER BUILD UP AREA = 935 SQ. FT

UNIT
4D
12BHK1

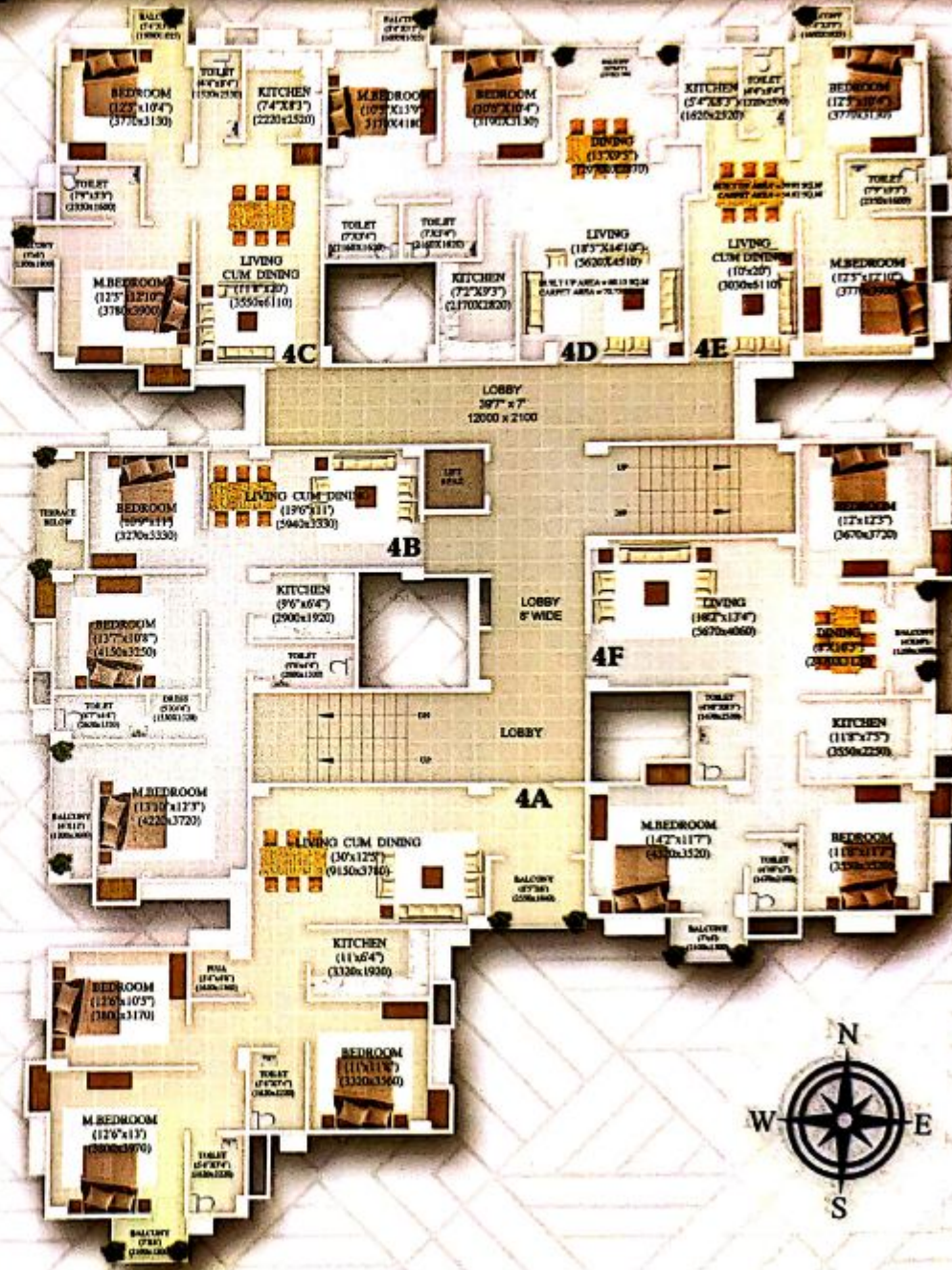
CARPET AREA = 70.75 SQ. M
NET FLAT AREA = 80.13 SQ. M
SUPER BUILD UP AREA = 1080 SQ. FT

UNIT
4E
12BHK1

CARPET AREA = 54.82 SQ. M
NET FLAT AREA = 63 SQ. M
SUPER BUILD UP AREA = 785 SQ. FT

UNIT
4F
13BHK1

CARPET AREA = 92.41 SQ. M
NET FLAT AREA = 107.08 SQ. M
SUPER BUILD UP AREA = 1445 SQ. FT



5TH FLOOR PLAN

UNIT
5A
13BHK1

CARPET AREA = 92.41 SQ. M
NET FLAT AREA = 107.08 SQ. M
SUPER BUILD UP AREA = 1445 SQ. FT

UNIT
5B
13BHK1

CARPET AREA = 77.95 SQ. M
NET FLAT AREA = 88.80 SQ. M
SUPER BUILD UP AREA = 1195 SQ. FT

UNIT
5C
12BHK1

CARPET AREA = 61.27 SQ. M
NET FLAT AREA = 69.51 SQ. M
SUPER BUILD UP AREA = 935 SQ. FT

UNIT
5D
13BHK1

CARPET AREA = 66.14 SQ. M
NET FLAT AREA = 74.93 SQ. M
SUPER BUILD UP AREA = 1020 SQ. FT

UNIT
5E
12BHK1

CARPET AREA = 61.27 SQ. M
NET FLAT AREA = 69.51 SQ. M
SUPER BUILD UP AREA = 935 SQ. FT

UNIT
5F
13BHK1

CARPET AREA = 92.41 SQ. M
NET FLAT AREA = 107.08 SQ. M
SUPER BUILD UP AREA = 1445 SQ. FT



6TH FLOOR PLAN

UNIT
6A
12BHK1

CARPET AREA = 60.99 SQ. M

NET FLAT AREA = 88 SQ. M

SUPER BUILD UP AREA = 1185 SQ. FT

UNIT
6B
14BHK1

CARPET AREA = 110.12 SQ. M

NET FLAT AREA = 136.02 SQ. M

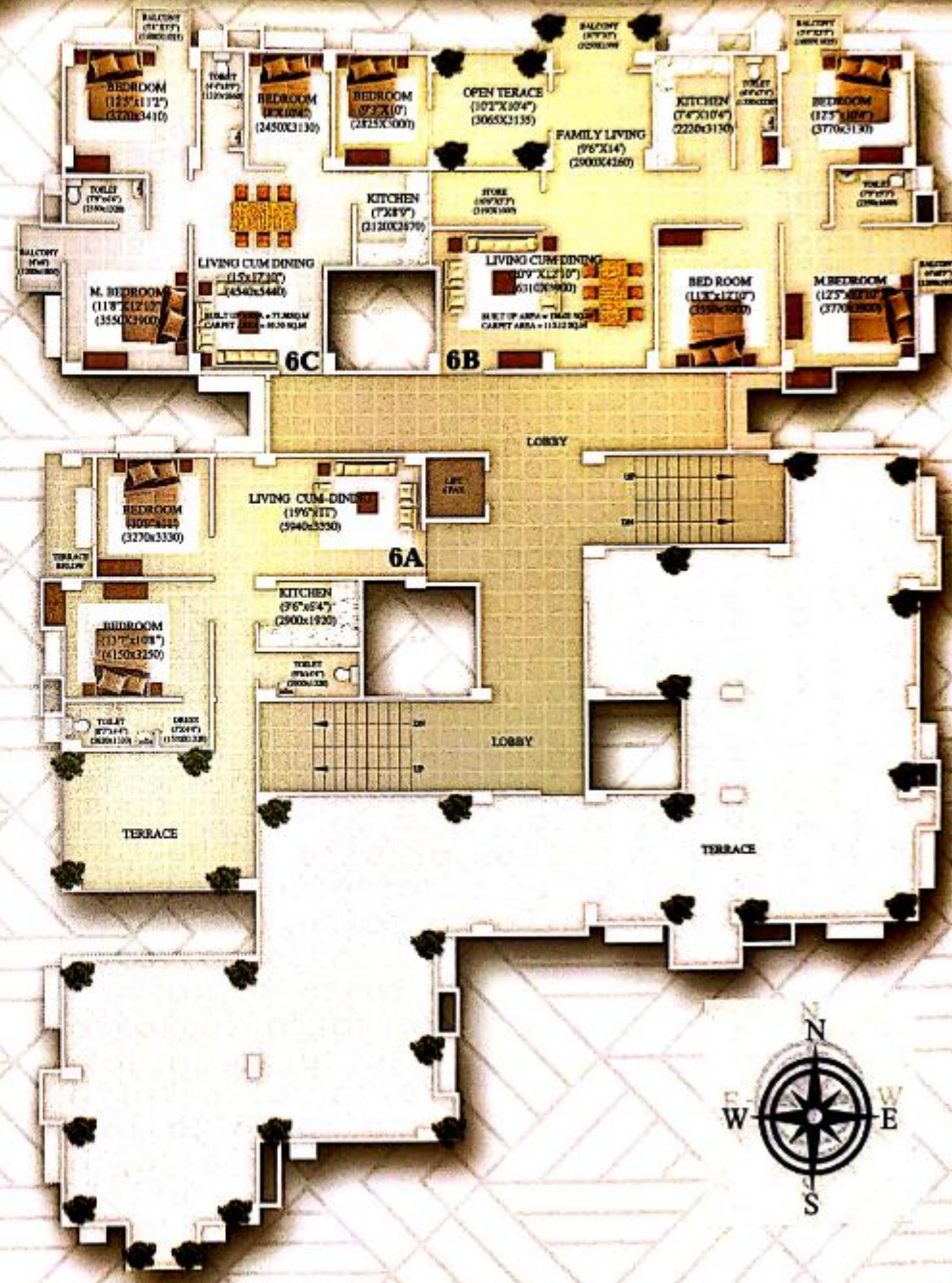
SUPER BUILD UP AREA = 1830 SQ. FT

UNIT
6C
13BHK1

CARPET AREA = 69.50 SQ. M

NET FLAT AREA = 77.44 SQ. M

SUPER BUILD UP AREA = 1050 SQ. FT



SITE PLAN



SPECIAL MODERN AMENITIES

Fascinating evaluation design with best architectural and structural design by expert.

Lift with a capacity of 4-6 persons.

Wide staircase for easy access.

Concealed wiring and plumbing of branded quality.

TV and phone point at drawing room and master bedroom.

Plantation of arboriculture.

Modification at extra cost subject to prior consent of the builder.

Provision for geyser.

Exhaust fan point at kitchen.

Excellent air circulation at every room.



SPECIFICATIONS (RESIDENTIAL)

- STRUCTURE:** RCC seismic earthquake resistant frame structure as per I.S. code of practice
- FLOORING:** Vitrified/ ceramic tiles for all the FLOORS of the residential units & anti skid tiles in bathrooms. Glazed tiles upto the height of 6" on bathroom walls.
- TOILET:** Sanitary fittings of branded quality.
- KITCHEN:** Standard quality granite on kitchen slab. Ceramic tiles on kitchen wall above slab upto a height of 2". Attached sink with C.P. tap.
- WALL:** 5" brick plaster walls.
- PAINTINGS:** Internal walls to be finished with wall putty & plastic paint. External walls with cement paint finish.
- FITTINGS:** Good quality branded fittings.
- WATER SUPPLY:** Deep well boring.
- ELECTRICALS:** Concealed wiring with good quality materials.
- DOORS & WINDOWS:** Main doors are wooden doors with WPC/wooden frame. Other doors are plywood flush doors/WPC frame. Windows are double slide aluminium windows.
- LOBBY & STAIR CASE:** With marble finish.

LOCATION MAP



PROMOTER

MP CONSTRUCTION
PALACIA GRAND, 6 MILE, GUWAHATI
CONTACT - 9864107847 / 9957985702

ARCHITECT

NEEV
GULSHAN GRAND, 3RD FLOOR,
DISPUR SUPER MARKET, GUWAHATI

SITE ADDRESS

PADUMBORI, GOTANAGAR,
JALUKBARI, GUWAHATI- 781 011